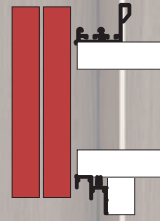
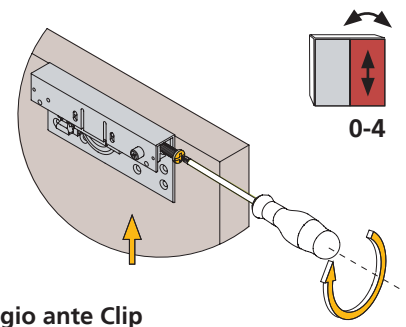


Space+

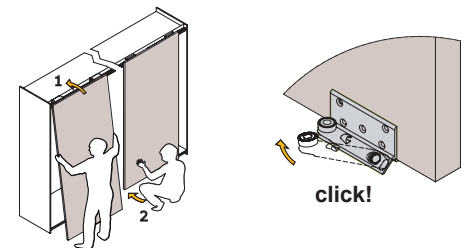




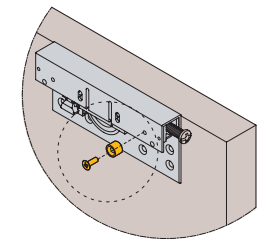
Regolazione
Adjustment



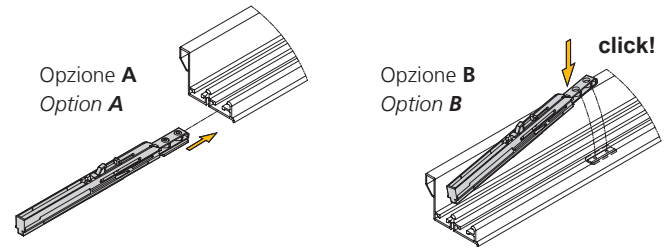
Montaggio ante Clip
Doors assembly



Salvamaniglia
Anti-croisement



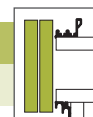
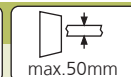
Chiusura soft
Soft-closing



New  **SLOW**  **85 kg**  **max.50mm**  

SPACE +

SPACE +

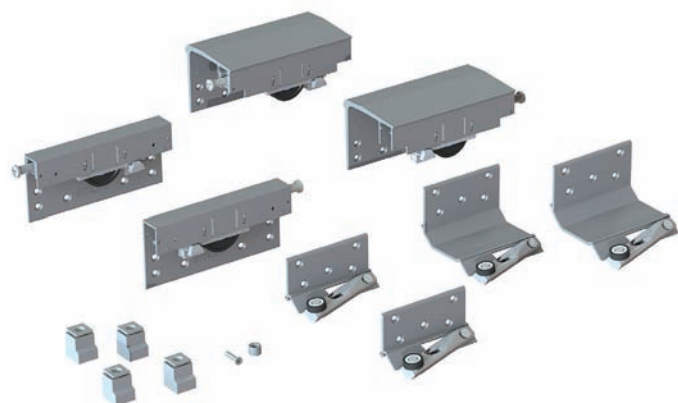


- Sistema per armadi con ante scorrevoli appese in legno o alluminio.
- Binari realizzati in alluminio naturale.
- Carrelli superiori e pattini inferiori in alluminio anodizzato opaco.
- Meccanismo con cuscinetti a sfere.
- Chiusura soft sia in apertura che in chiusura da 2 o 3 ante.
- Dotato di un meccanismo per l'inserimento automatico dei pattini nel carrello inferiore.
- Regolazione dell'anta in altezza 4mm.
- Include sistema salva maniglia.
- System for cabinets with wood or aluminium hanging sliding doors.
- Rails manufactured in natural aluminium.
- Upper and lower tracks finished in matt anodized aluminium are complete with ball bearing.
- Soft opening and closing action for 2 or 3 doors.
- Provided with an automatic mechanism to fit the roller in the lower track.
- Door height adjustment of 4mm.
- System with anti-derailment included.



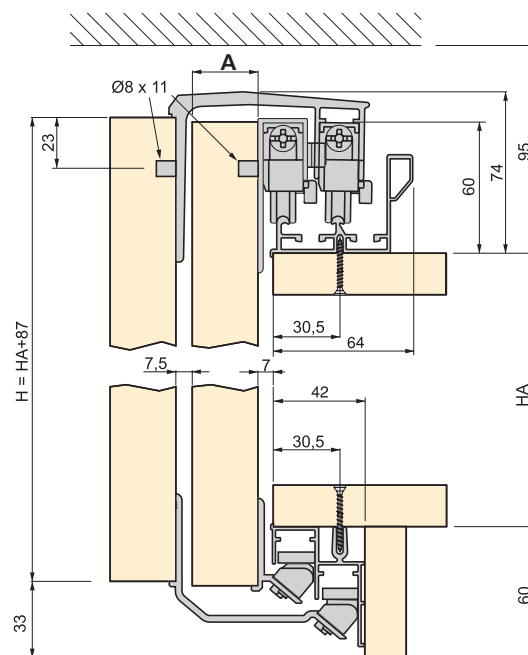
Set di carrelli superiori e pattini inferiori

Upper and lower sliding set



Set di carrelli / Set of sliding sets	A Max.	Cod.		
Porte interne / Interior door	-	60217	20	1
Porte esterne / Exterior door	23	60218	20	1
Porte esterne / Exterior door	30	60219	20	1
Porte esterne / Exterior door	35	60220	20	1
Porte esterne / Exterior door	50	60222	20	1

Acciaio, alluminio e tecnoplastica / Steel, aluminium and plastic



Set di freni per armadi a 2 o 3 porte

Brake set for cupboards with 2 or 3 doors



Cod.



60225	20	1
-------	----	---

Acciaio e tecnoplastica
Steel and plastic



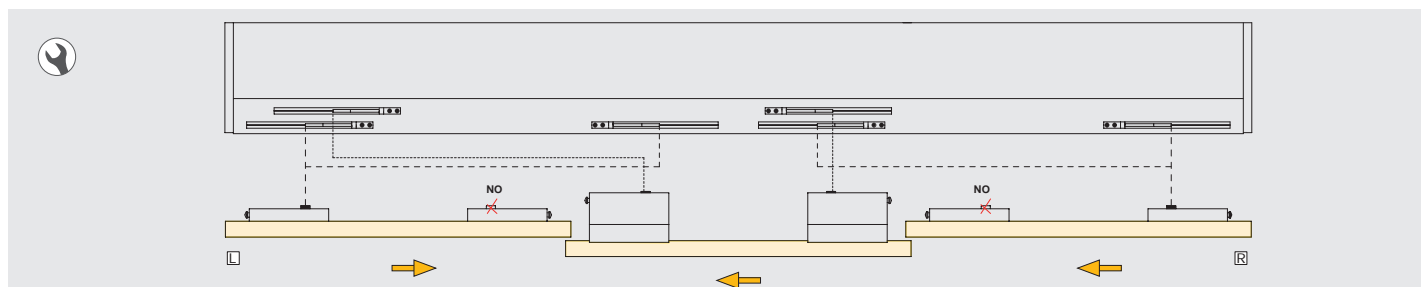
Set di freni per armadi con chiusura Soft

Brake set for cupboards with soft-closing



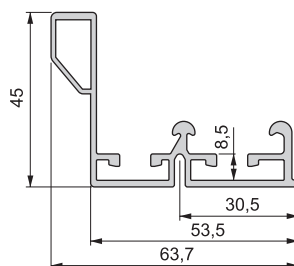
Ante Doors	n		Cod.	
2	4	50	60223 20	1
3	6	50	60224 20	1
2	4	85	60226 20	1
3	6	85	60227 20	1

Acciaio e tecnoplastica / Steel and plastic



Binario superiore rinforzato

Reinforced upper track

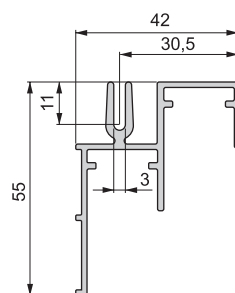


L	Cod.	
3 m	43319 61	24 m
3 m	42150 61	m

Alluminio / Aluminium

Binario inferiore

Lower track



L	Cod.	
3 m	43320 61	24 m
3 m	92057 61	m

Alluminio / Aluminium

Set binario superiore rinforzato e binario inferiore

Set reinforced upper track and lower track



L	Cod.	
3 m	40052 61	1

Alluminio / Aluminium



Ogni set contiene:
Un binario superiore da 3.000mm.
Un binario inferiore da 3.000mm.

Each set contains:
One upper track 3.000mm.
One lower track 3.000mm.